



# V36™ Deck Bed

## Fits the VersaCare® Bed

Compressible foot section adds length, flexibility and accommodates frame expansion/retraction

**Dimensions: 86" X 35" X 8"**

**Retracts to: 75" X 35" X 8"**

**Model Number: 44-V36**

### Nymed 6™ Healthcare Grade Stretchable Cast Coated Polyurethane Cover:

Designed for patient comfort and clinical efficacy:

- Low friction for ease of patient transfers
- Anti-microbial, anti-static, stain resistant, abrasion resistant
- Non-allergenic, latex free, water resistant

### Tri-Zone Foam Construction:

3 independently designed zones:  
Head Zone, Seat Zone, Foot Zone

### Foam Layers

- Soft plush foam top layer
- Gel infused soft conforming memory foam layer
- Internal supportive middle layer
- Ultra-high density firm base layer

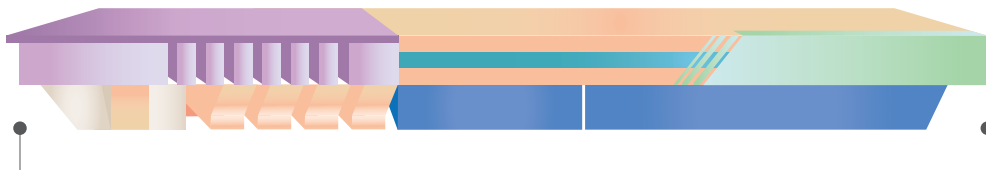
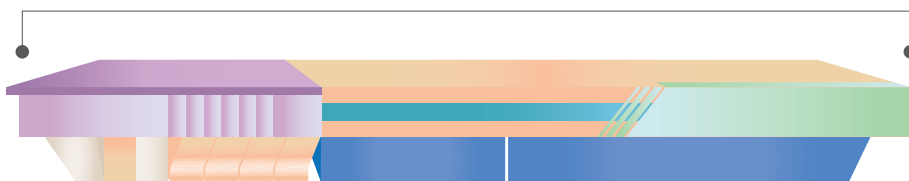
### Bottom Cover:

Durable bottom non-skid vinyl cover that is tear resistant and extends mattress performance.

### 4 built-in carrying handles

that are conveniently located for mattress handling; (includes cleanable coated webbing).

Retracts to 75" x 35" x 8"



Expands to 86" x 35" x 8"

*Note: foam and fabric colors may vary*



**Made in the USA**



**All foam  
CertiPUR-US  
certified**

# V36™ Deck Bed

## FirmEdge™ passive restraint system:

- Two zones of ultra-firm foam provide support on both sides of the mattress during entry and egress

## 3 sided, pocketed Heavy Duty Zipper for easy access with fluid protection flap.

Cover can be replaced in an easy 2-step process.

## Secondary Fluid Barrier:

- Assembled between foam and cover
- Unique two-way protection
- Protects foam if outer cover is compromised
- Protects cover by preventing foam from embrittling the fabric, extending the cover life

**Interior sheer liner** reduces friction between foam core and cover.

## Fire Barrier Protective Layer

Assembled between foam and cover. meets California Technical Bulletin 129 and CFR 1633

## Mattress Core

All foam is CertiPUR-US certified which means:

- Made without ozone depleters
- Made without PBDEs, TDCPP or TCEP ("Tris") flame retardants
- Made without mercury, lead and other heavy metals
- Made without formaldehyde
- Made without phthalates regulated by the Consumer Product Safety Commission
- Low VOC (Volatile Organic Compound) emissions for indoor air quality (less than 0.5 parts per million)

More information about CertiPUR and the high quality of foam that we use - <https://certipur.us/about-the-seal/>

## Cleaning

Easily cleaned with most hospital disinfectants. Virox® must be cleaned off with water after use.

## 12 month Standard Warranty

- Standard warranty covers material and workmanship.
- Extended warranty available

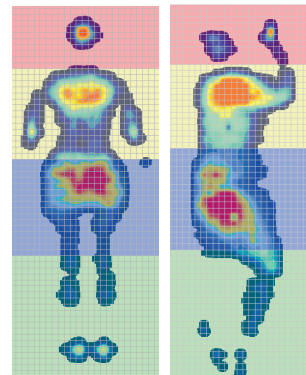
North America Mattress Corp. has been producing high-quality medical mattresses since 1996. The company is veteran owned and recently has been awarded the "Gold Award" for HIRE Vets from the U.S. Department of Labor.

Specialized design accommodates  
V-Style Deck Beds



End View

## Body Interface Pressure Imaging for V36 Mattress



Pressure and distribution imaging report prepared by RDSI for North America Mattress Corp. - V36 Deck Bed

Shown Left: Subject 3: Female, 5'3", 120lbs. Right: Subject 1: Male, 5'10", 190lbs

Imaging was conducted in December 2018 onsite at the North America Mattress Corp. manufacturing facility in Clackamas OR using Tactilus® imaging hardware and software manufactured by Sensor Products Inc. of Madison, New Jersey, USA.

Testing was performed in a controlled environment where the mattress was placed on a rigid laboratory surface and draped with the Tactilus® Sensor Pad. For a SUPINE view, each subject was first asked to lie on their back on the mattress with heads at the side, relaxed and breathing normally. After three minutes images were recorded and pressure was measured for three regions of the body: Scapula (shoulder), Sacral Prominence (lower back and hips) and Calf and Heel.

Secondly, each subject was asked to roll to their left side for a SAGITTAL view with their hands to the side of the head where measurements were taken for Sagittal Scapula (shoulder) Trochanter (hips) and Sagittal Calf and Heel.

Summary test results tables are arranged according to body region for each subject. The minimum, average and maximum readings for barometric pressure are displayed in terms of mmHg (millimeters of mercury).

## SPECIFICATIONS

<b>Thickness:</b>	8"
<b>Weight Capacity:</b>	500 lb

SIZE	MODEL NUMBER
86" x 35" x 8"	44-V36

North America Mattress Corp. reserves the right to change specification without notice.

All registered and trademarked brands listed are the property of that Company or Corporation. North America Mattress Corp. does not represent any of these brands or intend to portray it is associated with any brands listed in this catalog. Replacement mattresses are listed by manufacture for customer convenience only.

**We also manufacture replacement  
stretcher pads for most models.**



**North America Mattress Corp.**  
P.O. Box 2109 | Clackamas, OR 97015

Toll Free: +1 800 448 6163  
Local: 503 655 6163  
E-mail: [sales@namattress.com](mailto:sales@namattress.com)