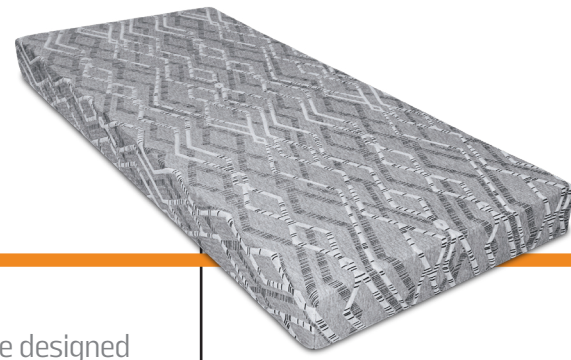




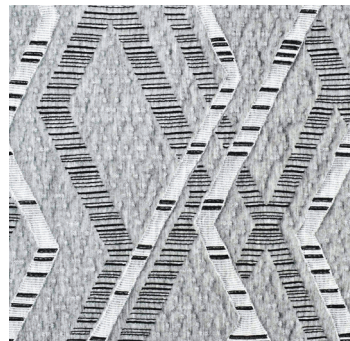
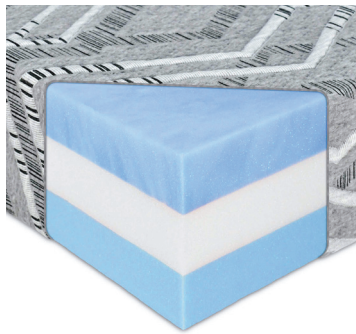
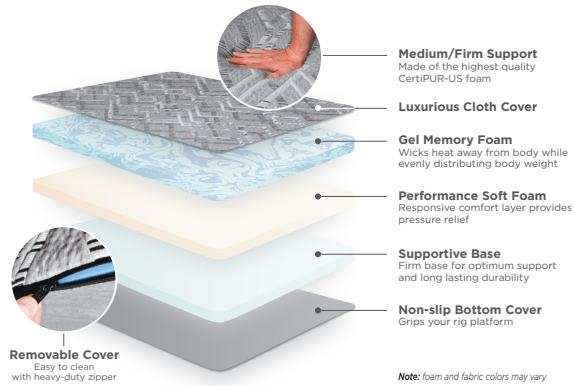
PRODUCT SPOTLIGHT

# ELITE RV Premium RV Mattress

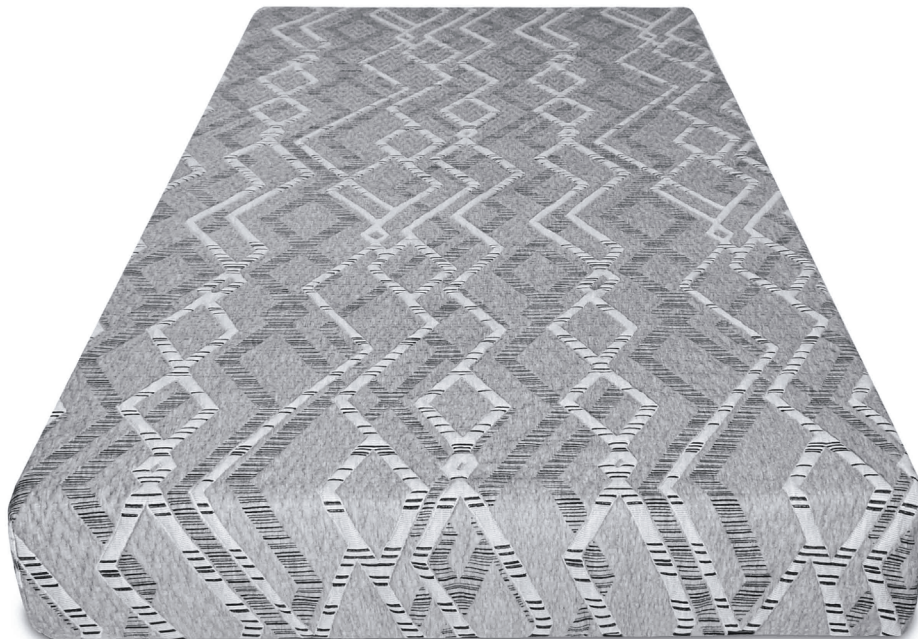


**BEST** A good night's sleep is essential when you're on the road. That's why we designed the Elite RV Mattress with your comfort in mind.

- Gel memory foam that regulates your body temperature for a comfortable night's sleep
- 3lb memory foam that conforms to your body for optimum comfort
- Internal soft foam layer provides extra comfort and support
- Firm foam base ensures stability and support for optimum pressure points
- Luxurious stretch cover is breathable and easy to clean



- 3 layers of premium, performance foam
- Gel memory foam, wicks heat away from body
- Plush top, medium-firm comfort
- Support where you need it.
- Made tough - water, abrasion and rip resistant
- CertiPUR-US Foam
- Easy to clean, removable cover
- Heavy-duty zipper
- 12 Month Warranty
- Made in the USA
- Veteran Owned
- Free ground shipping





# ELITE RV

## Premium RV Mattress

### Cooling Technology:

Enjoy the perfect combination of cozy comfort and temperature regulated sleep with our Gel memory foam layer. The liquid gel formula evenly distributes your body weight and ensures you stay cool even in warmer climates, while providing plush cushioning for an ultra-luxurious resting experience.

### Luxurious Stretch Cover:

Enjoy the ultimate combination of convenience and luxury with a breathable, easy-to clean stretch cover – perfect for convenient removal or replacement when necessary.

### Fits Most Travel Trailers:

Get the perfect mattress for your RV, no matter its model! Crafted with comfort in mind and designed to fit any Class A, B or C recreational vehicle.

### Advanced Foam Technology

This premium 6", multi-layered, mattress features a 2" layer of Gel memory foam over conforming and supportive layers. The firm foam base provides extra comfort and stability for optimum pressure point relief.

### Materials & Certification

**REMOVABLE COVER:** Soft-to-the-touch polyester top with zippers. Covers are easy to clean with mild soap and water.

**FOAM:** All foam is CertiPUR-US certified which means: Made without ozone depleting chemicals; PBDEs, TDCPP or TCEP ("Tris") flame retardants; mercury, lead, and other heavy metals. Made without formaldehyde, or phthalates regulated by the Consumer Product Safety Commission. Low VOC (Volatile Organic Compound) emissions for indoor air quality (less than 0.5 parts per million).

### Free Shipping

All RoamRest mattress ship free to the Contiguous U.S. Orders typically leave the warehouse within 5 business days. Please email [sales@namattress.com](mailto:sales@namattress.com) or give us a call at 1-800-448-6163 for questions or orders shipping outside Contiguous U.S. and Canada.

### 12 Month Warranty:

[Visit our website for details.](#)



## SPECIFICATIONS

### Cover:

Breathable polyester blend with zippers

Removable covers are easy to clean with mild soap and water

### Core:

6" – Multi layered mattress:

- 2" Gel Memory foam
- 2" Performance soft foam
- 2" Supportive foam base

8" – Multi layered mattress:

- 2" Gel Memory foam
- 2" Performance soft foam
- 4" Supportive foam base

### Standard sizes available:

74" x 36" x 6"

75" x 28" x 6"

75" x 30" x 6"

75" x 34" x 6"

RV Twin – 76" x 34" x 6"

RV Twin XL – 80" x 38" x 6"

RV Short Full – 75" x 48" x 6"

RV Full – 75" x 53" x 6"

RV Short Queen – 74" x 60" x 6"

RV Queen – 80" x 60" x 8"

